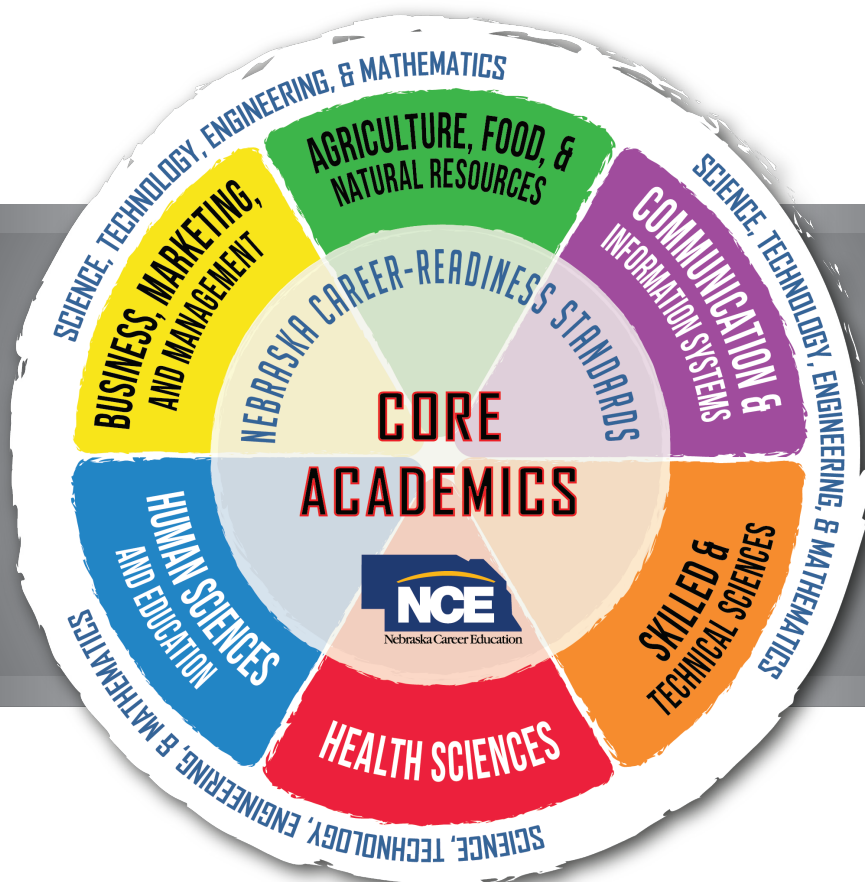




CAREER EXPLORATION

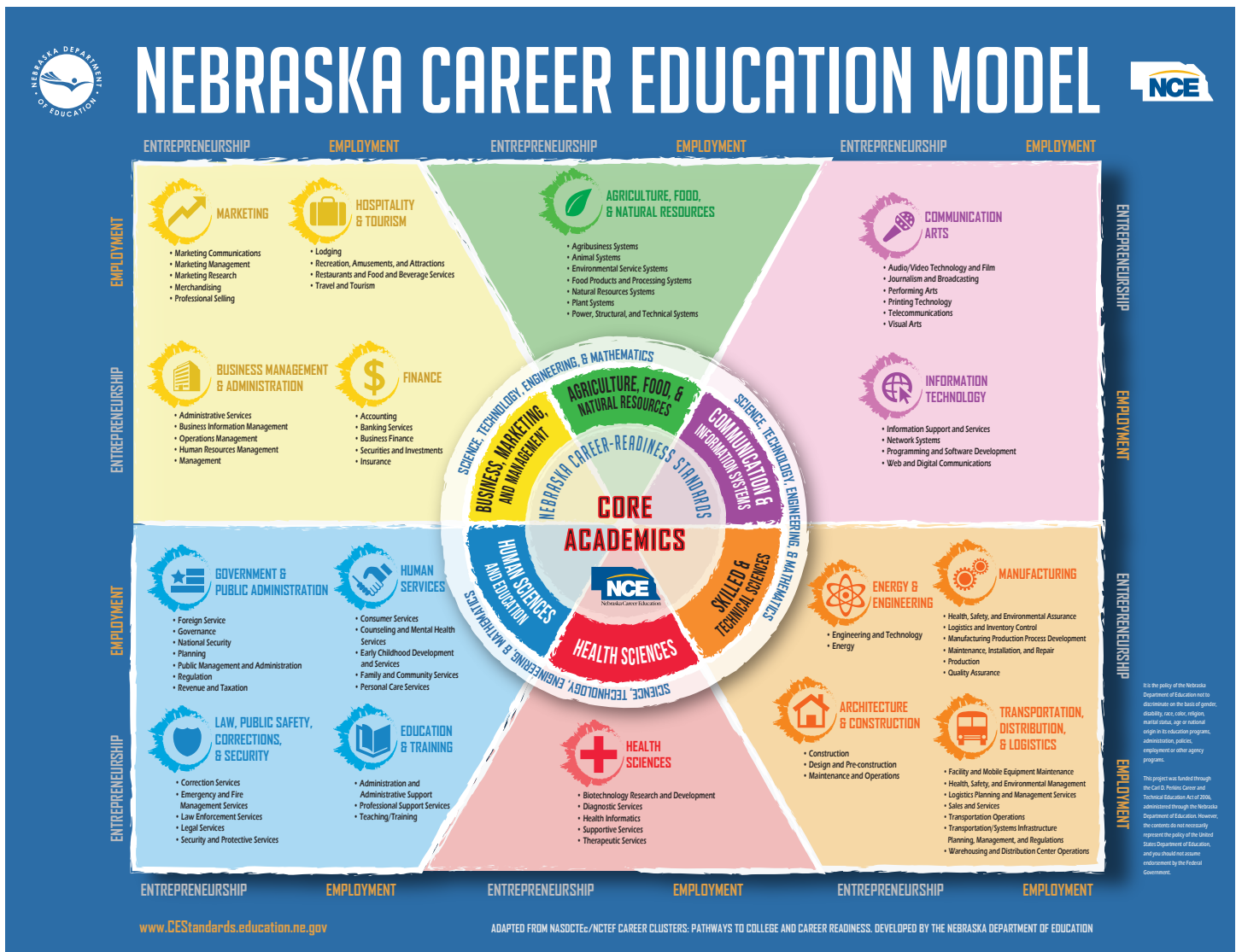
CAREER CLUSTERS AT-A-GLANCE



The Nebraska Career Education (NCE) Model

offers a system of career exploration through career fields and career clusters.

The NCE Model is the foundation of Nebraska Career & Technical Education (CTE) programs of study and Career & Technical Student Organizations CTSOs.



Understanding the NCE Model:

1. **Core Academics/College and Career Readiness:** At the center of the NCE Model is the expectation for all students to develop solid core academic proficiency. The next ring identifies specific college and Career Readiness Standards that prepare students for success in postsecondary education as well as entrepreneurship and employment.
2. **Career Fields:** The six career fields represent broad sectors of the job market as a way to begin exploration especially in elementary grades.
3. **Career Clusters:** Each career field contains one or more career clusters with more specific segments of the labor market. Career Clusters are groupings of occupations with similar skills. Exploration of the clusters provide students with information for decision making and to conceptualize the entire world of work.
4. **Employability and Entrepreneurship:** NCE provides the opportunity to gain the knowledge and skills for both employment and entrepreneurship in all career clusters to create the next generation of Nebraska's innovators for economic growth and vitality.

CAREER DEVELOPMENT



Career Development is a process by which individuals get to know their strengths and interests; learn how different jobs connect to those interests and skills; explore careers in current labor markets; and build career planning and management skills to achieve career goals.

The Nebraska Career Development model represents a career development process with three components: self-awareness, career exploration and career planning and management. All three components are included at each level for K-12 program planning. It is essential for students to learn through this experiential process to be well informed and prepared to make career decisions with the best fit to themselves and their goals.

THE NEBRASKA CAREER DEVELOPMENT MODEL CONSISTS OF THREE SKILL DOMAINS WITH COMPONENT PARTS:

- 1) **SELF-AWARENESS:** Self-awareness skills refer to individuals gaining the ability to identify their interests, skills, and work values. Self-awareness includes understanding one's own mastery level of career readiness (employability) skills. The Nebraska Career Readiness Skills are essential for all types of careers. This enhanced self-awareness paves the way to effectively explore careers and identify personal career goals with the best fit.
 - ✓ Nebraska Career Readiness Skills
 - ✓ Career & Academic Assessment
- 2) **CAREER EXPLORATION:** Career exploration skills consists of learning how to identify and analyze various career options in terms of what education, training, experience, and competencies are required for success. Exploration includes learning in workplace environments or directly in workplaces to discover and experience what it may be like to work in different occupations. It also involves learning how to evaluate how well a career matches or fits one's own interests, skills, strengths, and work values.
 - ✓ Nebraska Career Education Model, CTE Programs of Study, and Career & Technical Student Organizations
 - ✓ Labor Market Information
 - ✓ Workplace Learning Experiences
- 3) **CAREER PLANNING & MANAGEMENT:** Nearly all careers require education and training beyond high school. It is important to consider all possible options available for postsecondary education. Entrance into some careers may best begin with apprenticeships, on-the-job training, stackable credentials or certifications, entrepreneurship training, or entry-level employment. In some careers, entrance options require postsecondary degree completion before starting employment. Investigating the best option, understanding how access it and plan for it is the focus in this part of career development. Regardless of option selected, knowledge of entrance requirements, application processes, financial aid, completion timelines, locations, living arrangements and personal budget are some of the vital details students and families need to consider. Career planning and management is about moving from decision making to setting career goals with an action plan. In Nebraska, the plan for academics, career technical education, activities and workplace learning is a Personal Learning Plan (PLP). The PLP along with other artifacts and work samples are to be saved in a portfolio to display Nebraska Career Readiness Standards.
 - ✓ College and Career Options
 - ✓ Personal Learning Plans & Portfolio



CAREER EXPLORATION

This resource addresses the career exploration portion in the career development process.

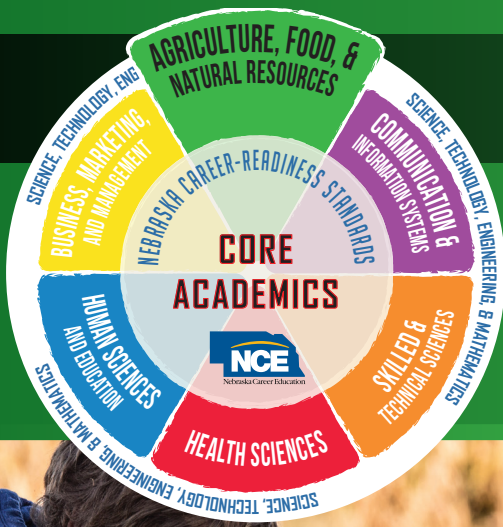
Understanding the Career Clusters At-A-Glance as a resource and guide for Career Exploration:

1. **Career Exploration** is expedited through career clusters. Career clusters introduced by the highlighted, color-coded career field on NCE model aid students in exploring the entire world of work. The introduction description summarizes types of pathway opportunities within each cluster.
2. **Career Exploration** includes awareness of current labor market information. Nebraska labor market projections through 2024 provided high wage, high demand, and high skill (H3) occupations, which expect increased job opportunities in the future. The H3 website encourages more exploration and to keep current on labor market.
3. **Career Exploration** is learning experiences in Career & Technical Education (CTE) focused on knowledge and skills in each career cluster. Typical course titles provide an idea of what students study in this career cluster and develop a personal learning plan for course registration. Course titles may differ at local school.
4. **Career Exploration** is actively participating in Career & Technical Student Organizations (CTSOs) developing leadership and career skills. CTSOs provide career skill competitive events at local, state and national levels. Career Clusters At-A-Glance indicate CTSOs most closely aligned to each career cluster.
5. **Career Exploration** is effective when students learn about and experience the environments of actual workplaces from professionals. A website of virtual tours of Nebraska businesses is an introductory strategy to learn about workplaces and career requirements.
6. **Career Exploration** emphasizes knowledge of all varieties of certificates and degrees for career preparation, different types of postsecondary education and training available as well as military training, entrepreneurship, apprenticeships, on-the-job training stackable credentials and entry –level employment as choices to reach career goals.
7. **Career Exploration** requires up-to-date information. Nebraska Career Education offers an online career information system including hundreds of occupations. This is available free by creating student and school accounts at: www.NebraskaCareerConnections.org. Nebraska Career Connections has features to assist with the entire process career development of self-awareness, career exploration and career planning & management.



Agriculture, Food and Natural Resources (AFNR)

This career cluster prepares for careers in planning, implementation, production, management, processing and/or marketing of agriculture commodities and services, distribution, financing, and development of agricultural commodities and resources including food, fiber, wood products, natural resources, horticulture, and other plant and animal products. It also includes related professional, technical and educational services.



AFNR H3 OCCUPATIONS

AFNR H3 OCCUPATIONS	Average Entry Wage
Farm Equipment Mechanics and Service Technicians	\$27,205
Environmental Engineers	\$55,064
Soil and Plant Scientists	\$36,980
Water and Wastewater Treatment Plant and System Operators	\$30,039
Buyers and Purchasing Agents, Farm Products	\$40,472
Biological Technicians	\$28,094
Environmental Engineering Technicians	\$27,585

This H3 list based on projected highest number of openings in Nebraska through 2024. Source: Nebraska Department of Labor, Office of Labor Market Information.



TYPICAL HIGH SCHOOL CLASSES

Ag Food and Natural Resources

Animal Science

Plant Science

Horticulture

AgriBusiness

Veterinary Science

Environmental and Natural Resources

Nursery and Landscape

Nutrition Science

Welding

Small Engines

CAREER & TECHNICAL STUDENT ORGANIZATIONS

GET INVOLVED WITH THESE ORGANIZATIONS!



VIRTUAL CAREER TOURS OF NEBRASKA BUSINESSES



Find more H3 jobs at: h3.ne.gov

www.necareertours.com

Education Pathways to begin your career	Certificate	Diploma	Associate Degree	Bachelor's Degree	Military
AGRIBUSINESS	✓		✓	✓	
AGRICULTURE EDUCATION TEACHER				✓	
AG SCIENCES / PRECISION AG	✓	✓	✓	✓	
AGRICULTURE BUSINESS & MANAGEMENT TECHNOLOGY	✓		✓	✓	
AGRONOMY			✓	✓	
ANIMAL SCIENCE			✓	✓	
DAIRY TECHNICIAN / SCIENCE		✓		✓	
DEERE CONSTRUCTION & FORESTRY EQUIPMENT TECH			✓		
DIESEL TECHNOLOGY - AG EQUIPMENT			✓		✓
DIVERSIFIED AGRICULTURE			✓	✓	
ENVIRONMENTAL SCIENCE			✓	✓	✓
FOOD SCIENCE				✓	✓
HORTICULTURE & GOLF COURSE MANAGEMENT			✓	✓	
LIVESTOCK MANAGEMENT			✓	✓	
MECHANIZED AGRICULTURE			✓	✓	
NATURAL RESOURCES			✓	✓	✓
VETERINARY TECHNOLOGY / SCIENCE			✓	✓	✓

Advanced and professional degrees not included on this chart.

Check out all education and training options. Entry into these careers may begin with:

- Apprenticeships
- On-the-job training
- Attaining stackable credentials
- Entry-level employment

Entrepreneurship is a career choice!



Start your own business!



One out of every three jobs in Nebraska is ag related.

EXPLORE MORE AT

For diplomas, certificates and associate degrees in most NE Community Colleges: www.mygreatcareer.com

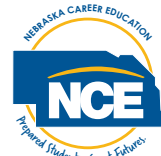
For all types of pathways including professional degrees: www.NebraskaCareerConnections.org or www.mynextmove.org

For military careers: www.careersinthemilitary.com or www.todaysmilitary.com

It is the policy of the Nebraska Department of Education not to discriminate on the basis of gender, disability, race, color, religion, marital status, age or national origin in its education programs, administration, policies, employment or other agency programs.

This project was funded through the Carl D. Perkins Career and Technical Education Act of 2006, administered through the Nebraska Department of Education. However, the contents do not necessarily represent the policy of the United States Department of Education, and you should not assume endorsement by the Federal Government.

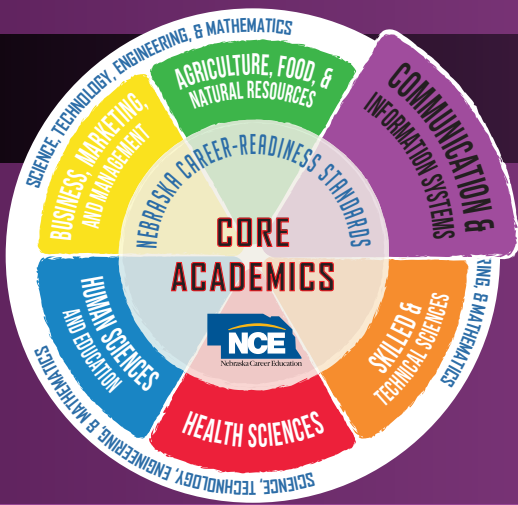
Funding provided through the Nebraska VR Career Pathway Advancement Project





Communication Arts

This career cluster offers two different avenues of concentration. Careers in the Performing Arts, or certain aspects of Journalism, Broadcasting and Film require creative talents. Careers in Audio-Video Communications Technology, Telecommunications or Printing Technology require strong backgrounds in computer and electronic-based technology and a solid foundation in math and science. Communicating effectively in both oral and written form is essential for all careers in the cluster. In addition, the creative aspects of this cluster are rapidly merging with the technological, offering exciting and challenging careers



ARTS, A/V TECHNOLOGY & COMMUNICATION OCCUPATIONS

Average Entry Wage

Graphic Designers	\$29,299
Telecommunications Line Installers and Repairers	\$31,737
Audio and Video Equipment Technicians	\$29,343
Telecommunications Equipment Installers and Repairers, Except Line Installers	\$37,378
Writers and Authors	\$29,070
Technical Writers	\$41,145
Art Directors	\$43,920
Producers and Directors	\$27,823
Music Directors and Composers	\$38,047

This H3 list based on projected highest number of openings in Nebraska through 2024.
Source: Nebraska Department of Labor, Office of Labor Market Information.

Find more H3 jobs at: h3.ne.gov



TYPICAL HIGH SCHOOL CLASSES

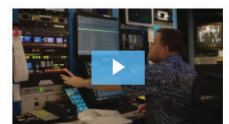
Introduction to Media
Digital Design
Media Production

CAREER & TECHNICAL STUDENT ORGANIZATIONS

GET INVOLVED WITH THESE ORGANIZATIONS!



VIRTUAL CAREER TOURS



www.necareertours.com

Education Pathways to begin your career	Certificate	Diploma	Associate Degree	Bachelor's Degree	Military
AUDIO RECORDING TECHNOLOGY			✓		✓
AVID PRO TOOLS MUSIC PRODUCTION	✓				
BROADCAST PRODUCTION	✓				✓
BROADCASTING - RADIO AND TV			✓		✓
BUSINESS, MARKETING, INFORMATION TECHNOLOGY TEACHER			✓		
COMMUNICATIONS SYSTEMS INSTALLATION AND REPAIR TECHNOLOGY		✓	✓		✓
DIGITAL CINEMA AND MEDIA			✓		✓
GAME AND INTERACTIVE MEDIA DESIGN				✓	✓
GRAPHIC DESIGN			✓	✓	✓
JOURNALISM			✓	✓	✓
MEDIA ARTS	✓	✓	✓		✓
MEDIA PRODUCTION	✓				✓
PHOTOGRAPHY			✓		✓
RECORDING STUDIO PRODUCTION	✓				✓
SPORTS COMMUNICATION			✓		
VIDEO PRODUCTION	✓				✓
VISUAL COMMUNICATION / DESIGN	✓	✓	✓	✓	✓

Advanced and professional degrees not included on this chart.

Check out all education and training options. Entry into these careers may begin with:

- Apprenticeships
- On-the-job training
- Attaining stackable credentials
- Entry-level employment

Entrepreneurship is a career choice!



Start your own business!



Arts, A/V Technology & Communications expects an average of 426 job openings each year.

EXPLORE MORE AT

For diplomas, certificates and associate degrees in most NE Community Colleges: www.mygreatcareer.com

For all types of pathways including professional degrees: www.NebraskaCareerConnections.org or www.mynextmove.org

For military careers: www.careersinthemilitary.com or www.todaysmilitary.com

It is the policy of the Nebraska Department of Education not to discriminate on the basis of gender, disability, race, color, religion, marital status, age or national origin in its education programs, administration, policies, employment or other agency programs.

This project was funded through the Carl D. Perkins Career and Technical Education Act of 2006, administered through the Nebraska Department of Education. However, the contents do not necessarily represent the policy of the United States Department of Education, and you should not assume endorsement by the Federal Government.

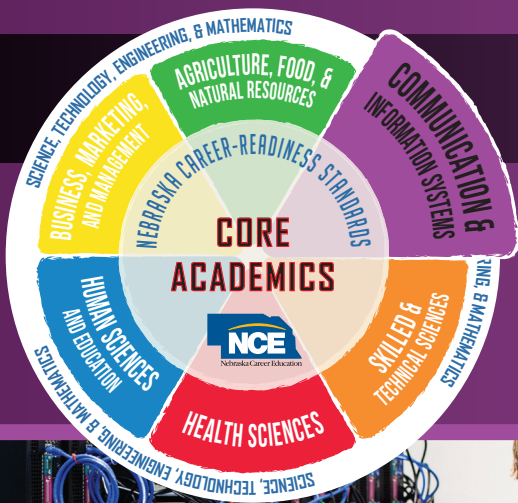
Funding provided through the Nebraska VR Career Pathway Advancement Project





Information Technology

This career cluster prepares for careers in Information Technology. These careers involve the design, development, support, and management of hardware, software, multimedia, and systems integration services. The IT industry is a dynamic and entrepreneurial working environment that has a revolutionary impact on the economy and society.



TYPICAL HIGH SCHOOL CLASSES

- Information Technology & Support
- PC Support and Maintenance
- Programming
- Network Systems
- Web Design
- Digital Design
- Cisco Certification Classes



INFORMATION TECHNOLOGY H3 OCCUPATIONS

Occupation	Average Entry Wage
Software Developers, Applications	\$56,185
Computer Systems Analysts	\$50,962
Computer User Support Specialists	\$30,607
Network and Computer Systems Administrators	\$49,280
Software Developers, Systems Software	\$56,525
Web Developers	\$36,735
Computer Network Architects	\$60,474
Database Administrators	\$49,344
Information Security Analysts	\$48,200
Computer Network Support Specialists	\$41,352
Computer Occupations, All Other	\$58,242
Computer Programmers	\$47,792

This H3 list based on projected highest number of openings in Nebraska through 2024. Source: Nebraska Department of Labor, Office of Labor Market Information.

CAREER & TECHNICAL STUDENT ORGANIZATIONS

GET INVOLVED WITH THESE ORGANIZATIONS!



VIRTUAL CAREER TOURS OF NEBRASKA BUSINESSES



Find more H3 jobs at: h3.ne.gov

www.necareertours.com

Education Pathways to begin your career	Certificate	Diploma	Associate Degree	Bachelor's Degree	Military
BUSINESS, MARKETING, INFORMATION TECHNOLOGY TEACHER				✓	
COMPUTER APPLICATION SPECIALIST	✓				✓
COMPUTER APPLICATION DEVELOPMENT			✓		✓
COMPUTER AIDED DESIGN DRAFTING			✓		✓
COMPUTER ENGINEERING				✓	✓
COMPUTER INFORMATION TECHNOLOGY	✓	✓	✓	✓	✓
COMPUTER MANAGEMENT INFORMATION SYSTEMS (MIS)				✓	✓
COMPUTER PROGRAMMING	✓	✓	✓	✓	✓
COMPUTER SCIENCE				✓	✓
INFORMATION TECHNICAL SUPPORT			✓		✓
INFORMATION TECHNOLOGY	✓		✓		✓
IBMi APPLICATION DEVELOPMENT	✓		✓		
CISCO NETWORKING ACADEMY	✓		✓		
INFORMATION SECURITY	✓		✓		✓
TECHNICAL SERVICES SUPPORT	✓		✓		✓
TELECOMMUNICATIONS MANAGEMENT				✓	✓
WEB & VISUAL APPLICATION DEVELOPMENT	✓		✓	✓	✓

Advanced and professional degrees not included on this chart.

Check out all education and training options. Entry into these careers may begin with:

- Apprenticeships
- On-the-job training
- Attaining stackable credentials
- Entry-level employment

Entrepreneurship is a career choice!



Start your own business!



Information Technology expects an average of **838** job openings each year.

EXPLORE MORE AT

For diplomas, certificates and associate degrees in most NE Community Colleges: www.mygreatcareer.com

For all types of pathways including professional degrees: www.NebraskaCareerConnections.org or www.mynextmove.org

For military careers: www.careersinthemilitary.com or www.todaysmilitary.com

It is the policy of the Nebraska Department of Education not to discriminate on the basis of gender, disability, race, color, religion, marital status, age or national origin in its education programs, administration, policies, employment or other agency programs.

This project was funded through the Carl D. Perkins Career and Technical Education Act of 2006, administered through the Nebraska Department of Education. However, the contents do not necessarily represent the policy of the United States Department of Education, and you should not assume endorsement by the Federal Government.

Funding provided through the Nebraska VR Career Pathway Advancement Project





Energy & Engineering

This career cluster prepares for careers in planning, managing and providing scientific research and development, professional and technical services including laboratory and testing services and problem solving for the challenging and ever-changing fields of energy and engineering.



ENERGY & ENGINEERING H3 OCCUPATIONS

Average Entry Wage

Industrial Engineers	\$57,816
Mechanical Engineers	\$57,257
Environmental Scientists and Specialists	\$41,031
Computer Hardware Engineers	\$63,963
Electrical Engineers	\$59,624
Chemists	\$39,585
Conservation Scientists	\$41,097
Architectural and Engineering Managers	\$93,690
Life, Physical, and Social Science Technicians	\$42,564
Statisticians	\$37,492
Survey Researchers	\$19,985
Cartographers and Photogrammetrists	\$42,220

This H3 list based on projected highest number of openings in Nebraska through 2024.
Source: Nebraska Department of Labor, Office of Labor Market Information.



TYPICAL HIGH SCHOOL CLASSES

- Computer Aided Drafting
- Engineering Design
- Computer Integrated Manufacturing
- Energy Exploration
- Digital Electronics
- Robotics
- Energy Generation and Distribution

CAREER & TECHNICAL STUDENT ORGANIZATIONS

GET INVOLVED WITH THESE ORGANIZATIONS!



VIRTUAL CAREER TOURS OF NEBRASKA BUSINESSES



Find more H3 jobs at: h3.ne.gov

www.necareertours.com

Education Pathways to begin your career	Certificate	Diploma	Associate Degree	Bachelor's Degree	Military
AUTOMATION ENGINEER TECHNOLOGY / TECHNICIAN			✓		✓
COMPUTER SCIENCES				✓	✓
ELECTRICAL CONSTRUCTION AND CONTROL			✓		✓
ENERGY GENERATION OPERATIONS			✓		✓
ELECTRICAL TECHNOLOGY	✓	✓	✓		✓
ENGINEERING; MECHANICAL, ELECTRICAL, CHEMICAL, ETC.				✓	✓
GEOLOGY AND EARTH SCIENCE				✓	✓
GIS / GEOGRAPHIC INFORMATION SYSTEMS TECHNICIAN	✓				✓
INDUSTRIAL ENGINEERING	✓		✓		✓
MATHEMATICS AND COMPUTER SCIENCE				✓	✓
MATH, SCIENCE AND INDUSTRIAL TECHNOLOGY TEACHER				✓	✓
MECHATRONICS	✓	✓	✓		✓
MECHATRONICS, ROBOTICS AND AUTOMATION ENGINEERING				✓	✓
POWERLINE CONSTRUCTION & MAINTENANCE TECHNOLOGY		✓	✓		✓
SCIENCE AND TECHNOLOGY				✓	✓
UTILITY LINE			✓		✓
WIND ENERGY TECHNOLOGY		✓	✓		✓

Advanced and professional degrees not included on this chart.

Check out all education and training options. Entry into these careers may begin with:

- Apprenticeships
- On-the-job training
- Attaining stackable credentials
- Entry-level employment

Entrepreneurship is a career choice!



Start your own business!



Energy and Engineering expects an average of **416 job openings** each year.

EXPLORE MORE AT

For diplomas, certificates and associate degrees in most NE Community Colleges: www.mygreatcareer.com

For all types of pathways including professional degrees: www.NebraskaCareerConnections.org or www.mynextmove.org

For military careers: www.careersinthemilitary.com or www.todaysmilitary.com

It is the policy of the Nebraska Department of Education not to discriminate on the basis of gender, disability, race, color, religion, marital status, age or national origin in its education programs, administration, policies, employment or other agency programs.

This project was funded through the Carl D. Perkins Career and Technical Education Act of 2006, administered through the Nebraska Department of Education. However, the contents do not necessarily represent the policy of the United States Department of Education, and you should not assume endorsement by the Federal Government.

Funding provided through the Nebraska VR Career Pathway Advancement Project





Manufacturing

This diverse career cluster prepares learners for careers in planning, managing, and performing the processing of materials into intermediate or final products. Careers also include related professional and technical support activities such as production planning and control, maintenance and manufacturing/process engineering.



MANUFACTURING H3 OCCUPATIONS

Average Entry Wage

Maintenance and Repair Workers, General	\$25,513
Industrial Machinery Mechanics	\$33,485
Machinists	\$26,581
Welders, Cutters, Solderers, and Brazers	\$28,551
Purchasing Agents <i>Except Wholesale, Retail, and Farm Products</i>	\$41,494
Electrical and Electronics Engineering Technicians	\$43,111
Industrial Engineering Technicians	\$37,810
Electrical and Electronics Engineering Repairers, Commercial and Industrial Equipment	\$43,111
Computer Numerically Controlled Machine Tool Programmers, Metal and Plastic	\$37,569

This H3 list based on projected highest number of openings in Nebraska through 2024. Source: Nebraska Department of Labor, Office of Labor Market Information.

Find more H3 jobs at: h3.ne.gov



TYPICAL HIGH SCHOOL CLASSES

- Intro to the Built Environment
- Computer Aided Drafting
- Computer Integrated Manufacturing
- Electronics
- Engineering Design
- Manufacturing Woods / Metals / Plastics
- Mechatronics
- Welding

CAREER & TECHNICAL STUDENT ORGANIZATIONS

GET INVOLVED WITH THESE ORGANIZATIONS!



VIRTUAL CAREER TOURS OF NEBRASKA BUSINESSES



www.necareertours.com

Education Pathways	Certificate	Diploma	Associate Degree	Bachelor's Degree	Military
ADVANCED MANUFACTURING AND DESIGN	✓	✓	✓		
DIVERSIFIED MANUFACTURING TECHNOLOGY	✓	✓	✓		
ELECTRICAL TECHNOLOGY	✓	✓	✓		✓
ELECTROMECHANICAL TECHNOLOGY / MECHATRONICS ENGINEERING		✓	✓	✓	✓
ELECTRONIC SYSTEMS TECHNOLOGY			✓		✓
ENERGY GENERATION OPERATIONS			✓		✓
ENGINEERING				✓	✓
INDUSTRIAL TECHNOLOGY TEACHER				✓	
LOGISTICS AND MATERIAL MANAGEMENT			✓	✓	✓
MANUFACTURING ENGINEERING TECHNOLOGY			✓		
METALLURGICAL TECHNOLOGY/TECHNICIAN				✓	
NONDESTRUCTIVE TESTING TECHNOLOGY			✓		✓
OCCUPATIONAL SAFETY AND HEALTH			✓	✓	✓
PLASTICS AND POLYMER ENGINEERING				✓	
PRECISION MACHINING AND AUTOMATION TECHNOLOGY		✓	✓		✓
QUALITY CONTROL TECHNOLOGY	✓	✓	✓	✓	
ROBOTICS			✓	✓	
TEXTILE SCIENCE			✓		
UTILITY LINE			✓		
WELDING TECHNOLOGY	✓	✓	✓		✓
WIND ENERGY TECHNOLOGY		✓	✓		

Advanced and professional degrees not included on this chart.

Check out all education and training options. Entry into these careers may begin with:

- Apprenticeships
- On-the-job training
- Attaining stackable credentials
- Entry-level employment

Entrepreneurship is a career choice!



Start your own business!



Nebraska is expecting an increase of 8,531 jobs in this Cluster between 2014 and 2024.

EXPLORE MORE AT

For diplomas, certificates and associate degrees in most NE Community Colleges: www.mygreatcareer.com

For all types of pathways including professional degrees: www.NebraskaCareerConnections.org or www.mynextmove.org

For military careers: www.careersinthemilitary.com or www.todaysmilitary.com

It is the policy of the Nebraska Department of Education not to discriminate on the basis of gender, disability, race, color, religion, marital status, age or national origin in its education programs, administration, policies, employment or other agency programs.

This project was funded through the Carl D. Perkins Career and Technical Education Act of 2006, administered through the Nebraska Department of Education. However, the contents do not necessarily represent the policy of the United States Department of Education, and you should not assume endorsement by the Federal Government.

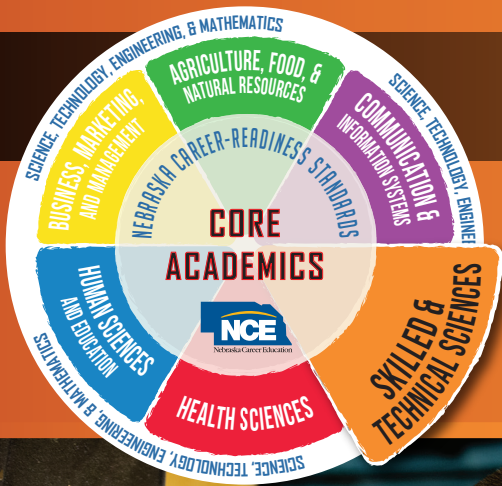
Funding provided through the Nebraska VR Career Pathway Advancement Project





Architecture and Construction

This career cluster prepares for careers in designing, planning, managing, building and maintaining the built environment. People employed in this cluster work on new structures, restorations, additions, alterations and repairs.



TYPICAL HIGH SCHOOL CLASSES

- Architecture and Construction
- Intro into the Built Environment
- Engineering Concepts
- Computer Aided Drafting
- Construction Technology
- Electricity
- Housing and Interior Design
- Structural Systems
- Engineering Design

CAREER & TECHNICAL STUDENT ORGANIZATIONS

GET INVOLVED WITH THESE ORGANIZATIONS!



ARCHITECTURE & CONSTRUCTION H3 OCCUPATIONS

ARCHITECTURE & CONSTRUCTION H3 OCCUPATIONS	Average Entry Wage
Carpenters	\$25,693
Electricians	\$30,386
Plumbers, Pipefitters, and Steamfitters	\$36,012
Heating, Air Conditioning, and Refrigeration Mechanics and Installers	\$32,472
Construction Managers	\$54,886
Electrical Power-Line Installers and Repairers	\$39,663
Civil Engineers	\$56,331
Cost Estimators	\$36,641
Brickmasons and Blockmasons	\$41,349
Sheet Metal Workers	\$29,302
Architects	\$50,904
Structural Iron and Steel Workers	\$28,929
Civil Engineering Technicians	\$30,431
Reinforcing Iron and Rebar Workers	\$25,549
Interior Designers	\$26,957

This H3 list based on projected highest number of openings in Nebraska through 2024. Source: Nebraska Department of Labor, Office of Labor Market Information.

VIRTUAL CAREER TOURS OF NEBRASKA BUSINESSES



Find more H3 jobs at: h3.ne.gov

www.necareertours.com

Education Pathways to begin your career	Certificate	Diploma	Associate Degree	Bachelor's Degree	Military
ARCHITECTURE				✓	✓
ARCHITECTURE ENGINEERING TECHNOLOGY			✓	✓	✓
BUILDING CONSTRUCTION TECHNOLOGY / MANAGEMENT	✓	✓	✓	✓	✓
DRAFTING			✓		✓
ELECTRICAL CONSTRUCTION & CONTROL			✓		✓
ELECTRICAL ENGINEERING				✓	✓
ELECTRICAL TECHNOLOGY		✓			✓
GIS / GEOGRAPHIC INFORMATION SYSTEMS TECHNICIAN	✓				✓
HEATING, AIR CONDITIONING, AND REFRIGERATION	✓	✓	✓		✓
SKILLED & TECHNICAL SERVICES TEACHER				✓	
INTERIOR DESIGN			✓	✓	
LAND SURVEYING / CIVIL ENGINEER TECHNOLOGY			✓		✓
MECHATRONICS	✓	✓	✓	✓	✓
PLUMBING TECHNOLOGY		✓	✓		✓
POWERLINE CONSTRUCTION & MAINTENANCE TECHNOLOGY		✓	✓		✓
UTILITY LINEWORKER			✓		✓

Advanced and professional degrees not included on this chart.

Check out all education and training options. Entry into these careers may begin with:

- Apprenticeships
- On-the-job training
- Attaining stackable credentials
- Entry-level employment

Entrepreneurship is a career choice!



Start your own business!



Nebraska is expecting an increase of 9,252 jobs in this Cluster between 2014 and 2024.

EXPLORE MORE AT

For diplomas, certificates and associate degrees in most NE Community Colleges: www.mygreatcareer.com

For all types of pathways including professional degrees: www.NebraskaCareerConnections.org or www.mynextmove.org

For military careers: www.careersinthemilitary.com or www.todaysmilitary.com

It is the policy of the Nebraska Department of Education not to discriminate on the basis of gender, disability, race, color, religion, marital status, age or national origin in its education programs, administration, policies, employment or other agency programs.

This project was funded through the Carl D. Perkins Career and Technical Education Act of 2006, administered through the Nebraska Department of Education. However, the contents do not necessarily represent the policy of the United States Department of Education, and you should not assume endorsement by the Federal Government.

Funding provided through the Nebraska VR Career Pathway Advancement Project





Transportation, Distribution, and Logistics (TDL)

This career cluster prepares for careers in planning, management, and movement of people, materials, and goods by road, pipeline, air, rail, water and related professional support services such as transportation infrastructure planning and management, logistics services, mobile equipment and facility maintenance.



TDL H3 OCCUPATIONS

TDL H3 OCCUPATIONS	Average Entry Wage
Heavy and Tractor-Trailer Truck Drivers	\$32,006
Bus and Truck Mechanics and Diesel Engine Specialists	\$30,645
Automotive Service Technicians and Mechanics	\$23,512
Automotive Body and Related Repairers	\$30,889
Rail Car Repairers	\$26,219
Mobile Heavy Equipment Mechanics, Except Engines	\$35,172
Aircraft Mechanics and Service Technicians	\$34,890
Avionics Technicians	NA
Logisticians	\$48,722

This H3 list based on projected highest number of openings in Nebraska through 2024. Source: Nebraska Department of Labor, Office of Labor Market Information.

Find more H3 jobs at: h3.ne.gov



TYPICAL HIGH SCHOOL CLASSES

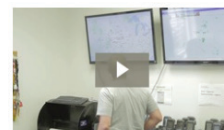
- Energy, Power and Transportation Systems
- Power and Technology
- Technologies, Transportation and Logistics
- Automotive and Mobile Equipment Service and Repair
- Automotive Body Repair and Refinishing
- Transportation Technology Services and Maintenance
- Digital Electronics
- Distribution and Logistics
- Business Logistics

CAREER & TECHNICAL STUDENT ORGANIZATIONS

GET INVOLVED WITH THESE ORGANIZATIONS!



VIRTUAL CAREER TOURS OF NEBRASKA BUSINESSES



www.necareertours.com

Education Pathways to begin your career	Certificate	Diploma	Associate Degree	Bachelor's Degree	Military
AIR TRAFFIC CONTROL	✓		✓	✓	✓
AVIATION MAINTENANCE	✓	✓	✓		✓
CDL - COMMERCIAL DRIVERS LICENSE	✓				✓
AUTO BODY TECHNOLOGY	✓	✓	✓		
AUTO COLLISION REPAIR TECHNOLOGY			✓		✓
AUTOMOTIVE TECHNOLOGY	✓	✓	✓		✓
CLASSIC CAR RESTORATION			✓		
DIESEL TECHNOLOGY	✓	✓	✓		✓
ENGINEERING / ENGINEERING TECHNOLOGY			✓	✓	✓
FORD AUTOMOTIVE STUDENT SERVICE			✓		
GENERAL MOTORS AUTOMOTIVE SERVICE			✓		
INDUSTRIAL TECHNOLOGY TEACHER				✓	
LOGISTICS AND MATERIAL MANAGEMENT			✓	✓	✓
MOPAR - CHRYSLER/DODGE/RAM/JEEP AUTOMOTIVE PROGRAM			✓		
MOTORCYCLE, ATV PERSONAL WATERCRAFT TECHNOLOGY		✓			
SUPPLY CHAIN MANAGEMENT				✓	✓
TRANSPORTATION MOBILITY MANAGEMENT				✓	✓

Advanced and professional degrees not included on this chart.

Check out all education and training options. Entry into these careers may begin with:

- Apprenticeships
- On-the-job training
- Attaining stackable credentials
- Entry-level employment

Entrepreneurship is a career choice!



Start your own business!



Nebraska is expecting an increase of 10,182 jobs in this Cluster between 2014 and 2024.

EXPLORE MORE AT

For diplomas, certificates and associate degrees in most NE Community Colleges: www.mygreatcareer.com

For all types of pathways including professional degrees: www.NebraskaCareerConnections.org or www.mynextmove.org

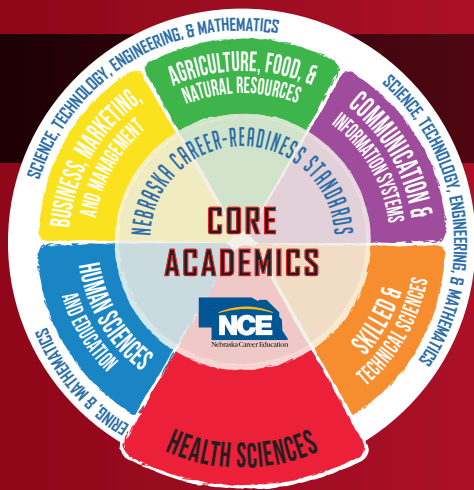
For military careers: www.careersinthemilitary.com or www.todaysmilitary.com

It is the policy of the Nebraska Department of Education not to discriminate on the basis of gender, disability, race, color, religion, marital status, age or national origin in its education programs, administration, policies, employment or other agency programs.

This project was funded through the Carl D. Perkins Career and Technical Education Act of 2006, administered through the Nebraska Department of Education. However, the contents do not necessarily represent the policy of the United States Department of Education, and you should not assume endorsement by the Federal Government.

Funding provided through the Nebraska VR Career Pathway Advancement Project





+ Health Sciences

This career cluster prepares for careers that promote health, wellness, and diagnosis as well as treat injuries and diseases. Some of the careers involve working directly with people, while others involve research into diseases or collecting and formatting data and information. Work locations are varied and may be in hospitals, medical or dental offices or laboratories, cruise ships, medevac units, sports arenas, space centers, or within the community.



HEALTH SCIENCE OCCUPATIONS

HEALTH SCIENCE OCCUPATIONS	Average Entry Wage
Registered Nurses	\$46,691
Medical and Health Services Managers	\$62,760
Physical Therapists	\$57,600
Physicians and Surgeons, All Other	\$57,712
Medical and Clinical Laboratory Technicians	\$28,016
Medical Records and Health Information Technicians	\$29,641
Dental Assistants	\$27,633
Radiologic Technologists	\$40,993
Nurse Practitioners	\$68,977
Medical and Clinical Laboratory Technologists	\$42,695
Pharmacists	\$69,321
Physical Therapist Assistants	\$36,986
Dietitians and Nutritionists	\$40,968

This H3 list based on projected highest number of openings in Nebraska through 2024.
Source: Nebraska Department of Labor, Office of Labor Market Information.

Find more H3 jobs at: h3.ne.gov



TYPICAL HIGH SCHOOL CLASSES

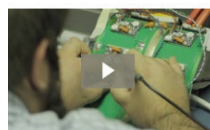
- Health Information Technology
- Medical Technology
- Certified Nursing Assistant
- Pharmacy Technician
- Medical Aide
- Phlebotomy Technician
- Behavioral Health
- Performance Nutrition
- Community Medical Issues / Public Health

CAREER & TECHNICAL STUDENT ORGANIZATIONS

GET INVOLVED WITH THESE ORGANIZATIONS!



VIRTUAL CAREER TOURS OF NEBRASKA BUSINESSES



www.necareertours.com

Education Pathways to begin your career	Certificate	Diploma	Associate Degree	Bachelor's Degree	Military
BIOTECHNOLOGY				✓	✓
CNA - CERTIFIED NURSING ASSISTANT	✓				
DENTAL ASSISTING / DENTAL HYGIENE		✓	✓		✓
EMERGENCY MEDICAL SERVICES / TECHNICIAN	✓	✓	✓		✓
EMT - PARAMEDIC	✓	✓	✓		✓
FAMILY CONSUMER SCIENCE / PHYSICAL SCIENCE/ SCIENCE TEACHER				✓	
HEALTH INFORMATION MANAGEMENT SERVICES	✓	✓	✓	✓	✓
HEALTH INFORMATION TECHNOLOGY		✓	✓	✓	✓
MEDICAL ASSISTING	✓		✓		
MEDICAL INSURANCE CODING / BILLING / CLAIMS			✓		
MEDICAL LABORATORY TECHNOLOGY			✓		✓
MEDICATION AIDE	✓				
NURSING			✓	✓	✓
OCCUPATIONAL THERAPY ASSISTANT			✓		✓
PHARMACY TECHNICIAN		✓			✓
PHYSICAL THERAPIST ASSISTANT			✓		✓
POLYSOMNOGRAPHIC TECHNOLOGY	✓				✓
RADIOLOGIC TECHNOLOGY			✓		✓
RESPIRATORY CARE			✓		✓
SURGICAL TECHNOLOGY			✓		✓

Advanced and professional degrees not included on this chart.

Check out all education and training options. Entry into these careers may begin with:

- Apprenticeships
- On-the-job training
- Attaining stackable credentials
- Entry-level employment

Entrepreneurship is a career choice!



Start your own business!



Nebraska is expecting an increase of 13,272 jobs in this Cluster between 2014 and 2024.

EXPLORE MORE AT

For diplomas, certificates and associate degrees in most NE Community Colleges: www.mygreatcareer.com

For all types of pathways including professional degrees: www.NebraskaCareerConnections.org or www.mynextmove.org

For military careers: www.careersinthemilitary.com or www.todaysmilitary.com

It is the policy of the Nebraska Department of Education not to discriminate on the basis of gender, disability, race, color, religion, marital status, age or national origin in its education programs, administration, policies, employment or other agency programs.

This project was funded through the Carl D. Perkins Career and Technical Education Act of 2006, administered through the Nebraska Department of Education. However, the contents do not necessarily represent the policy of the United States Department of Education, and you should not assume endorsement by the Federal Government.

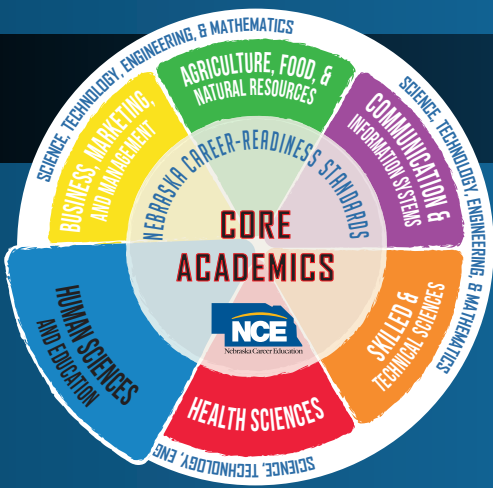
Funding provided through the Nebraska VR Career Pathway Advancement Project





Government & Public Administration

This career cluster prepares for careers in planning, managing and providing administrative and regulatory services and performing government functions at the local, state and federal levels. It includes governance, national security, foreign service, revenue and taxation, and policy development.



GOVERNMENT & PUBLIC ADMINISTRATION OCCUPATIONS

Average Entry Wage

Compliance Officers	\$42,048
Financial Examiners	\$51,785
Appraisers and Assessors of Real Estate	\$28,670
Occupational Health and Safety Specialists	\$44,470
Agricultural Inspectors	\$29,504
Tax Examiners and Collectors, and Revenue Agents	\$36,009

This H3 list based on projected highest number of openings in Nebraska through 2024. Source: Nebraska Department of Labor, Office of Labor Market Information.



TYPICAL HIGH SCHOOL CLASSES

- Political Science
- Civics
- Government
- History
- Public Speaking
- Economics
- Citizenship

CAREER & TECHNICAL STUDENT ORGANIZATIONS

GET INVOLVED WITH THESE ORGANIZATIONS!



VIRTUAL CAREER TOURS

OF NEBRASKA BUSINESSES



Find more H3 jobs at: h3.ne.gov

<http://bit.ly/2m6MjiL>

Education Pathways to begin your career	Certificate	Diploma	Associate Degree	Bachelor's Degree	Military
ACCOUNTING			✓	✓	✓
ACTUARIAL SCIENCE				✓	
AMERICAN GOVERNMENT AND POLITICS				✓	
ECONOMICS				✓	✓
EDUCATION, HEALTH OR PUBLIC POLICY				✓	
FINANCE				✓	✓
FOREIGN LANGUAGE				✓	✓
INTELLIGENCE				✓	✓
INTERNATIONAL RELATIONS AND AFFAIRS				✓	✓
OCCUPATIONAL SAFETY & HEALTH TECHNOLOGY				✓	✓
POLITICAL SCIENCE AND GOVERNMENT				✓	
PSYCHOLOGY				✓	✓
PUBLIC ADMINISTRATION				✓	✓
PUBLIC POLICY				✓	
SOCIOLOGY				✓	
STATISTICS				✓	✓

Advanced and professional degrees not included on this chart.

Check out all education and training options. Entry into these careers may begin with:

- Apprenticeships
- On-the-job training
- Attaining stackable credentials
- Entry-level employment

Entrepreneurship is a career choice!



Start your own business!



Nebraska is expecting an increase of 755 jobs in this Cluster between 2014 and 2024.

EXPLORE MORE AT

For diplomas, certificates and associate degrees in most NE Community Colleges: www.mygreatcareer.com

For all types of pathways including professional degrees: www.NebraskaCareerConnections.org or www.mynextmove.org

For military careers: www.careersinthemilitary.com or www.todaysmilitary.com

It is the policy of the Nebraska Department of Education not to discriminate on the basis of gender, disability, race, color, religion, marital status, age or national origin in its education programs, administration, policies, employment or other agency programs.

This project was funded through the Carl D. Perkins Career and Technical Education Act of 2006, administered through the Nebraska Department of Education. However, the contents do not necessarily represent the policy of the United States Department of Education, and you should not assume endorsement by the Federal Government.

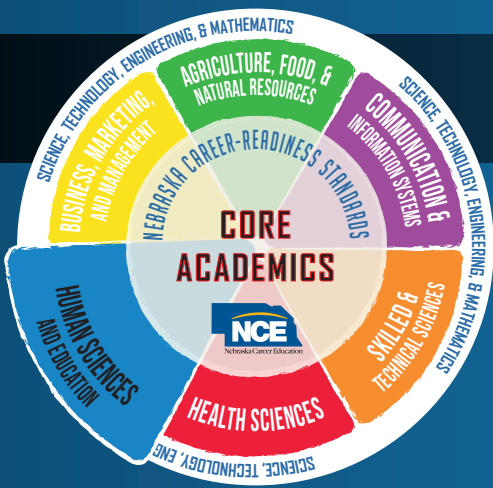
Funding provided through the Nebraska VR Career Pathway Advancement Project





Human Services

This career cluster prepares for careers that improve quality of life and promote safe, healthy communities. It includes careers to educate and assist individuals/families with needed counseling and mental health services, family and community services, personal care, consumer services and financial planning services, housing and nutrition planning.



HUMAN SERVICES OCCUPATIONS

	Average Entry Wage
Child, Family, and School Social Workers	\$33,829
Mental Health Counselors	\$31,086
Healthcare Social Workers	\$32,936
Social and Community Service Managers	\$39,799
Rehabilitation Counselors	\$26,457
Clinical, Counseling, and School Psychologists	\$45,126
Health Educators	\$28,900
Substance Abuse & Behavioral Disorder Counselors	\$31,910
Barbers	\$22,035
Mental Health and Substance Abuse Social Workers	\$28,614
Community and Social Service Specialists, All Other	\$33,727
Clergy	\$30,215

This H3 list based on projected highest number of openings in Nebraska through 2024. Source: Nebraska Department of Labor, Office of Labor Market Information.

Find more H3 jobs at: h3.ne.gov



TYPICAL HIGH SCHOOL CLASSES

- Child Development
- Human Growth and Development
- Relationships
- Fashion Design and Marketing
- Human Food and Nutrition
- Nutrition Science
- Housing and Interior Design
- Personal Finance

CAREER & TECHNICAL STUDENT ORGANIZATIONS

GET INVOLVED WITH THESE ORGANIZATIONS!



NEBRASKA STATE ASSOCIATION

VIRTUAL CAREER TOURS OF NEBRASKA BUSINESSES



www.necareertours.com

Education Pathways to begin your career	Certificate	Diploma	Associate Degree	Bachelor's Degree	Military
AESTHETITIAN / ESTHETICIAN / ELECTROLYSIS	✓		✓		
BUSINESS ADMINISTRATION				✓	✓
CHEMICAL DEPENDENCY COUNSELOR			✓		✓
CHILD CARE	✓		✓		
COSMETOLOGY / BARBERING	✓	✓	✓		
FAMILY SCIENCE				✓	
FAMILY AND CONSUMER SCIENCE TEACHER				✓	
FASHION DESIGN			✓		
FINANCIAL PLANNING	✓		✓		
FUNERAL SERVICE AND MORTUARY SCIENCE			✓		
GERONTOLOGY				✓	
HUMAN SERVICES / SCIENCES	✓	✓	✓	✓	✓
MASSAGE THERAPY	✓				
NAIL TECHNICIAN	✓				
NUTRITION, FITNESS AND HEALTH PROMOTION			✓	✓	
PSYCHOLOGY				✓	✓
SOCIAL WORK			✓	✓	✓
YOUTH SERVICES / YOUTH MINISTRIES				✓	

Advanced and professional degrees not included on this chart.

Check out all education and training options. Entry into these careers may begin with:

- Apprenticeships
- On-the-job training
- Attaining stackable credentials
- Entry-level employment

Entrepreneurship is a career choice!



Start your own business!



Human Services expects an average of **1,712 job openings** each year.

EXPLORE MORE AT

For diplomas, certificates and associate degrees in most NE Community Colleges: www.mygreatcareer.com

For all types of pathways including professional degrees: www.NebraskaCareerConnections.org or www.mynextmove.org

For military careers: www.careersinthemilitary.com or www.todaysmilitary.com

It is the policy of the Nebraska Department of Education not to discriminate on the basis of gender, disability, race, color, religion, marital status, age or national origin in its education programs, administration, policies, employment or other agency programs.

This project was funded through the Carl D. Perkins Career and Technical Education Act of 2006, administered through the Nebraska Department of Education. However, the contents do not necessarily represent the policy of the United States Department of Education, and you should not assume endorsement by the Federal Government.

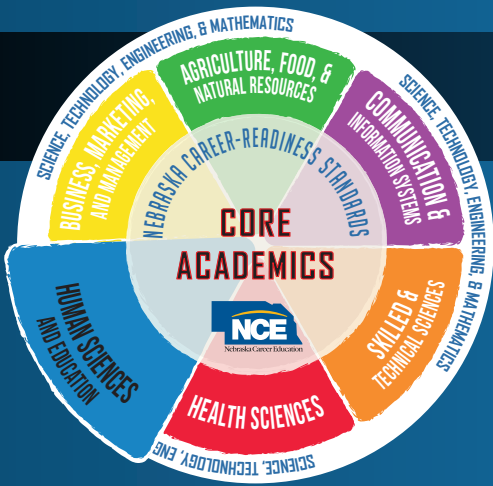
Funding provided through the Nebraska VR Career Pathway Advancement Project





Law and Public Safety, Corrections and Security

This career cluster prepares for careers in planning, managing, and providing legal, public safety, protective services and homeland security, including professional and technical support services.



LAW, PUBLIC SAFETY, CORRECTIONS & SECURITY OCCUPATIONS

Average Entry Wage

Lawyers	\$52,777
Paralegals and Legal Assistants	\$32,777
Firefighters	\$40,710
Probation Officers and Correctional Treatment Specialists	\$35,473
First-Line Supervisors of Fire Fighting and Prevention Workers	\$53,156

This H3 list based on projected highest number of openings in Nebraska through 2024. Source: Nebraska Department of Labor, Office of Labor Market Information.



TYPICAL HIGH SCHOOL CLASSES

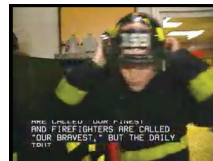
- Foundations of Law, Corrections, Security
- Criminal Justice
- Judicial Process
- Police and Society
- Emergency Medical Technician
- Certified Emergency Responder Technician

CAREER & TECHNICAL STUDENT ORGANIZATIONS

GET INVOLVED WITH THESE ORGANIZATIONS!



VIRTUAL CAREER TOURS OF NEBRASKA BUSINESSES



Find more H3 jobs at: h3.ne.gov

<http://bit.ly/2m6MjiL>

Education Pathways to begin your career	Certificate	Diploma	Associate Degree	Bachelor's Degree	Military
CORRECTIONAL OFFICER / SECURITY OFFICER	✓	✓	✓		✓
COURT REPORTING			✓		✓
CRIMINAL JUSTICE	✓	✓	✓	✓	
EMERGENCY MEDICAL TECHNICIAN / SERVICES	✓		✓	✓	✓
FIRE PREVENTION AND SAFETY			✓		✓
FORENSIC SCIENCE AND TECHNOLOGY				✓	✓
HAZARDOUS MATERIAL TECHNICIAN	✓				✓
HOMELAND SECURITY			✓		✓
HUMAN SERVICES				✓	
LAW ENFORCEMENT			✓		✓
PARALEGAL / ADMINISTRATIVE ASSISTANT - LEGAL			✓		✓
PRE-LAW STUDIES				✓	✓

Advanced and professional degrees not included on this chart.

Check out all education and training options. Entry into these careers may begin with:

- Apprenticeships
- On-the-job training
- Attaining stackable credentials
- Entry-level employment

Entrepreneurship is a career choice!



Start your own business!



Law, Public Safety, Corrections and Security expects an average of **731 job openings** each year.

EXPLORE MORE AT

For diplomas, certificates and associate degrees in most NE Community Colleges: www.mygreatcareer.com

For all types of pathways including professional degrees: www.NebraskaCareerConnections.org or www.mynextmove.org

For military careers: www.careersinthemilitary.com or www.todaysmilitary.com

It is the policy of the Nebraska Department of Education not to discriminate on the basis of gender, disability, race, color, religion, marital status, age or national origin in its education programs, administration, policies, employment or other agency programs.

This project was funded through the Carl D. Perkins Career and Technical Education Act of 2006, administered through the Nebraska Department of Education. However, the contents do not necessarily represent the policy of the United States Department of Education, and you should not assume endorsement by the Federal Government.

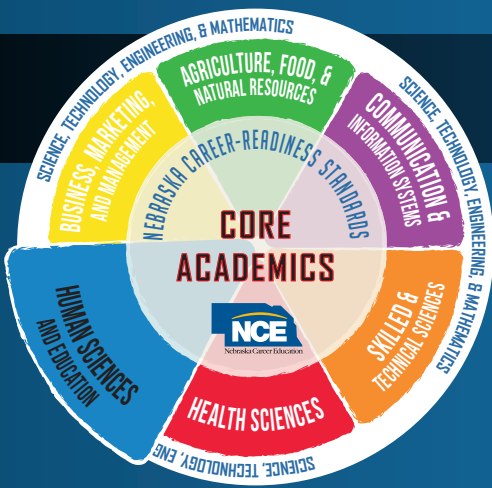
Funding provided through the Nebraska VR Career Pathway Advancement Project





Education and Training

This career cluster prepares for careers in providing, supporting and managing the education and training of millions of learners. It encompasses ages from pre-school through adults; varies from informal to formal settings; and provides for the skills necessary for initial entrance as well as updating skills to advance within the job or train for a different one.



EDUCATION & TRAINING OCCUPATIONS

Average Entry Wage

Elementary School Teachers	\$40,624
Secondary School Teachers	\$40,769
Middle School Teachers	\$42,576
Education Administrators, Elementary and Secondary School	\$73,076
Health Specialties Teachers, Postsecondary	\$50,372
Educational, Guidance, School, and Vocational Counselors	\$37,145
Vocational Education Teachers, Postsecondary	\$38,717
Special Education Teachers	\$40,591
Interpreters and Translators	\$27,132
Librarians	\$28,393
Career/Technical Education Teachers/ Secondary School	\$41,147

This H3 list based on projected highest number of openings in Nebraska through 2024. Source: Nebraska Department of Labor, Office of Labor Market Information.

Find more H3 jobs at: h3.ne.gov



TYPICAL HIGH SCHOOL CLASSES

- Human Growth and Development
- Exploring Education and Training
- Experiencing Teaching
- Child Development
- Early Childhood Education

CAREER & TECHNICAL STUDENT ORGANIZATIONS

GET INVOLVED WITH THESE ORGANIZATIONS!



NEBRASKA STATE ASSOCIATION



VIRTUAL CAREER TOURS OF NEBRASKA BUSINESSES



www.necareertours.com



BE A TEACHER!

Nebraska is in a teacher shortage crisis!

Education Pathways to begin your career	Certificate	Diploma	Associate Degree	Bachelor's Degree	Military
ADULT AND CONTINUING EDUCATION	✓		✓	✓	✓
CAREER, TECHNICAL EDUCATION TEACHER				✓	✓
CHILD CARE WORKER	✓				
EARLY CHILDHOOD EDUCATION	✓	✓	✓	✓	
ELEMENTARY EDUCATION AND TEACHING				✓	
HIGH SCHOOL EDUCATION AND TEACHING				✓	
LIBRARY AND INFORMATION SCIENCE	✓			✓	✓
MIDDLE SCHOOL EDUCATION AND TEACHING				✓	
PHYSICAL EDUCATION / COACHING		✓	✓	✓	✓
SIGN LANGUAGE INTERPRETING			✓		✓
SPEECH-LANGUAGE PATHOLOGY				✓	✓
SPECIAL EDUCATION				✓	
TEACHER ASSISTANT / AIDE			✓		

Advanced and professional degrees not included on this chart.



Nebraska is expecting an increase of 5,453 jobs in this Cluster between 2014 and 2024.

Check out all education and training options. Entry into these careers may begin with:

- Apprenticeships
- On-the-job training
- Attaining stackable credentials
- Entry-level employment



Education and Training expects an average of 2,191 job openings each year.

EXPLORE MORE AT

For diplomas, certificates and associate degrees in most NE Community Colleges: www.mygreatcareer.com

For all types of pathways including professional degrees: www.NebraskaCareerConnections.org or www.mynextmove.org

For military careers: www.careersinthemilitary.com or www.todaysmilitary.com

It is the policy of the Nebraska Department of Education not to discriminate on the basis of gender, disability, race, color, religion, marital status, age or national origin in its education programs, administration, policies, employment or other agency programs.

This project was funded through the Carl D. Perkins Career and Technical Education Act of 2006, administered through the Nebraska Department of Education. However, the contents do not necessarily represent the policy of the United States Department of Education, and you should not assume endorsement by the Federal Government.

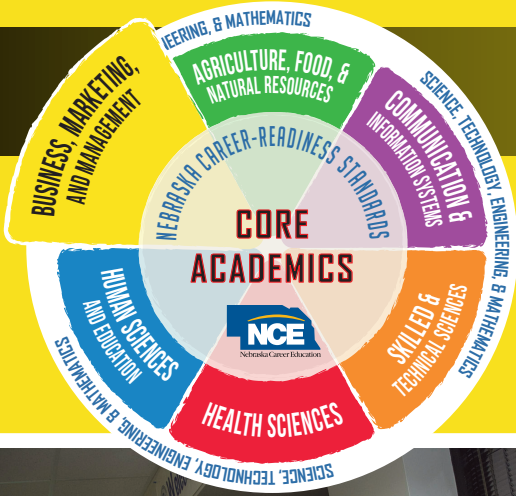
Funding provided through the Nebraska VR Career Pathway Advancement Project





Marketing

This career cluster prepares for careers in planning, managing and performing varieties of marketing activities to create, communicate and deliver value to customers and manage customer relationships in ways that benefit the organization and its stakeholders.



HIGH WAGE + **HIGH DEMAND** + **HIGH SKILL** = **H3 JOBS**

MARKETING H3 OCCUPATIONS

MARKETING H3 OCCUPATIONS	Average Entry Wage
Market Research Analysts and Marketing Specialists	\$37,072
Public Relations Specialists	\$30,474
Sales Managers	\$64,461
Marketing Managers	\$57,249
Sales Representatives, Wholesale and Manufacturing, Technical and Scientific Products	\$37,414
Public Relations and Fundraising Managers	\$53,615
Wholesale and Retail Buyers, Except Farm Products	\$34,572

This H3 list based on projected highest number of openings in Nebraska through 2024. Source: Nebraska Department of Labor, Office of Labor Market Information.



TYPICAL HIGH SCHOOL CLASSES

- Marketing
- Marketing Management
- Entrepreneurship

CAREER & TECHNICAL STUDENT ORGANIZATIONS

GET INVOLVED WITH THESE ORGANIZATIONS!



VIRTUAL CAREER TOURS OF NEBRASKA BUSINESSES



Find more H3 jobs at: h3.ne.gov

www.necareertours.com

Education Pathways to begin your career	Certificate	Diploma	Associate Degree	Bachelor's Degree	Military
ADVERTISING				✓	
APPAREL AND TEXTILE MARKETING MANAGEMENT				✓	
BUSINESS ADMINISTRATION AND MANAGEMENT			✓	✓	✓
BUSINESS, MARKETING, INFORMATION TECHNOLOGY TEACHER				✓	
ECONOMICS				✓	
ENTREPRENEURSHIP	✓		✓		
FASHION MERCHANDISING	✓		✓		
INTERNATIONAL MARKETING				✓	
MARKETING ASSISTANT / SPECIALIST	✓		✓		
MARKETING MANAGEMENT				✓	
PUBLIC RELATIONS, ADVERTISING AND APPLIED COMMUNICATION				✓	✓
REAL ESTATE	✓		✓		
RETAIL MANAGEMENT		✓	✓		✓
SALES, DISTRIBUTION AND MARKETING OPERATIONS	✓		✓		
SELLING SKILLS AND SALES OPERATIONS			✓		

Advanced and professional degrees not included on this chart.

Check out all education and training options. Entry into these careers may begin with:

- Apprenticeships
- On-the-job training
- Attaining stackable credentials
- Entry-level employment

Entrepreneurship is a career choice!



Start your own business!



Marketing expects an average of **4,211 job openings** each year.

EXPLORE MORE AT

For diplomas, certificates and associate degrees in most NE Community Colleges: www.mygreatcareer.com

For all types of pathways including professional degrees: www.NebraskaCareerConnections.org or www.mynextmove.org

For military careers: www.careersinthemilitary.com or www.todaysmilitary.com

It is the policy of the Nebraska Department of Education not to discriminate on the basis of gender, disability, race, color, religion, marital status, age or national origin in its education programs, administration, policies, employment or other agency programs.

This project was funded through the Carl D. Perkins Career and Technical Education Act of 2006, administered through the Nebraska Department of Education. However, the contents do not necessarily represent the policy of the United States Department of Education, and you should not assume endorsement by the Federal Government.

Funding provided through the Nebraska VR Career Pathway Advancement Project





Hospitality and Tourism

This career cluster prepares for careers in the management, marketing and operations of restaurants and other food services, lodging, attractions, recreation events and travel related services.



HOSPITALITY AND TOURISM H3 OCCUPATIONS

HOSPITALITY AND TOURISM H3 OCCUPATIONS	Average Entry Wage
Baker	\$18,550
Travel Agents	\$26,587
Food Handler	\$19,100
Lodging Manager	\$43,934
Concierges	\$21,984
Chefs	\$25,446
Cooks, short order	\$18,860
Tour Guides	\$20,328
Food Service Manager	\$36,824
Supervisors - Janitorial and Housekeeping	\$24,958

This H3 list based on projected highest number of openings in Nebraska through 2024. Source: Nebraska Department of Labor, Office of Labor Market Information.

Find more H3 jobs at: h3.ne.gov



TYPICAL HIGH SCHOOL CLASSES

- Human Food Nutrition and Wellness
- Marketing
- Hospitality and Tourism
- Culinary Skills
- ProStart /Food Safety
- Entrepreneurship

CAREER & TECHNICAL STUDENT ORGANIZATIONS

GET INVOLVED WITH THESE ORGANIZATIONS!



VIRTUAL CAREER TOURS OF NEBRASKA BUSINESSES



www.necareertours.com

Education Pathways to begin your career	Certificate	Diploma	Associate Degree	Bachelor's Degree	Military
BUSINESS, MARKETING, INFORMATION TECHNOLOGY TEACHER				✓	✓
CULINARY ARTS AND MANAGEMENT			✓		✓
FACILITIES PLANNING AND MANAGEMENT				✓	✓
FAMILY CONSUMER SCIENCE TEACHER				✓	
FOOD HANDLER	✓				✓
FOOD PROTECTION MANAGER	✓				✓
FOOD SAFETY MANAGER	✓				✓
FOOD SCIENCE AND TECHNOLOGY				✓	
FOOD SERVICE AND DIETARY MANAGEMENT	✓				✓
FOOD SERVICE AND HOSPITALITY	✓	✓	✓		✓
HOSPITALITY AND TOURISM MANAGEMENT			✓	✓	
MEETING AND EVENT PLANNING			✓	✓	✓
PARKS, RECREATION, FITNESS AND LEISURE STUDIES			✓	✓	✓
SALES AND MARKETING			✓	✓	
TRAVEL AND TOURISM			✓	✓	

Advanced and professional degrees not included on this chart.

Check out all education and training options. Entry into these careers may begin with:

- Apprenticeships
- On-the-job training
- Attaining stackable credentials
- Entry-level employment

Entrepreneurship is a career choice!



Start your own business!



Hospitality and Tourism expects an average of **5,060 job openings** each year.

EXPLORE MORE AT

For diplomas, certificates and associate degrees in most NE Community Colleges: www.mygreatcareer.com

For all types of pathways including professional degrees: www.NebraskaCareerConnections.org or www.mynextmove.org

For military careers: www.careersinthemilitary.com or www.todaysmilitary.com

It is the policy of the Nebraska Department of Education not to discriminate on the basis of gender, disability, race, color, religion, marital status, age or national origin in its education programs, administration, policies, employment or other agency programs.

This project was funded through the Carl D. Perkins Career and Technical Education Act of 2006, administered through the Nebraska Department of Education. However, the contents do not necessarily represent the policy of the United States Department of Education, and you should not assume endorsement by the Federal Government.

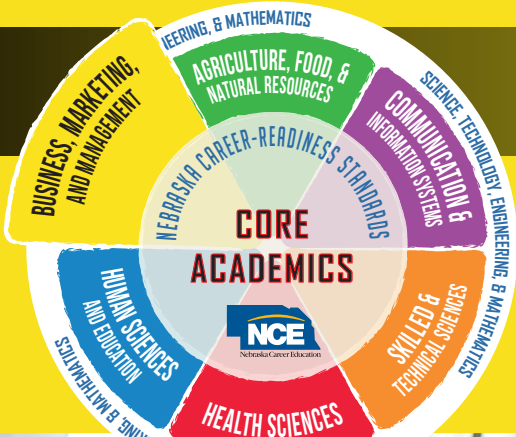
Funding provided through the Nebraska VR Career Pathway Advancement Project





Business Management and Administration

This career cluster prepares for career opportunities that are dedicated to performing administrative managerial processes vital to the success and on-going existence of a business organization, regardless of the sector or industry in which the business resides or the product/service it provides.



BUSINESS MANAGEMENT & ADMINISTRATION H3 OCCUPATIONS

Average Entry Wage

General and Operations Managers	\$54,453
Management Analysts	\$54,138
Business Operations Specialists, All Other	\$48,372
Human Resources Specialists	\$37,654
Training and Development Specialists	\$34,579
Computer and Information Systems Managers	\$78,306
Managers, All Other	\$56,479
Administrative Services Managers	\$52,837
Industrial Production Managers	\$58,934
Operations Research Analysts	\$44,428
Human Resources Managers	\$78,163
Compensation, Benefits, and Job Analysis Specialists	\$42,234

This H3 list based on projected highest number of openings in Nebraska through 2024.
Source: Nebraska Department of Labor, Office of Labor Market Information.

Find more H3 jobs at: h3.ne.gov



TYPICAL HIGH SCHOOL CLASSES

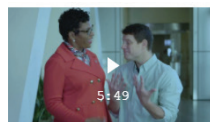
- Introduction to Business
- Management and Leadership
- Business Law
- Entrepreneurship
- Accounting
- Business Communications
- Business in a Global Economy
- Financial Services

CAREER & TECHNICAL STUDENT ORGANIZATIONS

GET INVOLVED WITH THESE ORGANIZATIONS!



VIRTUAL CAREER TOURS OF NEBRASKA BUSINESSES



www.necareertours.com

Education Pathways to begin your career	Certificate	Diploma	Associate Degree	Bachelor's Degree	Military
ADMINISTRATIVE PROFESSIONAL / OFFICE MANAGEMENT	✓	✓	✓		✓
BUSINESS ADMINISTRATION			✓	✓	✓
BUSINESS ADMIN., ACCOUNTING, ENTREPRENEURSHIP AND LOGISTICS	✓	✓	✓		✓
BUSINESS TECHNOLOGY	✓	✓	✓		
BUSINESS, MARKETING, INFORMATION TECHNOLOGY TEACHER				✓	
ENTREPRENEURSHIP	✓	✓	✓		
HUMAN RESOURCES MANAGEMENT				✓	✓
INTERNATIONAL BUSINESS			✓	✓	
LOGISTICS AND MATERIAL MANAGEMENT			✓	✓	✓
MANAGEMENT ASSISTANT	✓				
MANAGEMENT INFORMATION SYSTEMS				✓	✓
MARKETING SPECIALIST			✓	✓	
OPERATIONS MANAGEMENT AND SUPERVISION				✓	✓
REAL ESTATE			✓		
RETAIL MANAGEMENT			✓		✓

Advanced and professional degrees not included on this chart.

Check out all education and training options. Entry into these careers may begin with:

- Apprenticeships
- On-the-job training
- Attaining stackable credentials
- Entry-level employment

Entrepreneurship is a career choice!



Start your own business!



Business Management and Administration expects an average of **4,553 job openings** each year.

EXPLORE MORE AT

For diplomas, certificates and associate degrees in most NE Community Colleges: www.mygreatcareer.com

For all types of pathways including professional degrees: www.NebraskaCareerConnections.org or www.mynextmove.org

For military careers: www.careersinthemilitary.com or www.todaysmilitary.com

It is the policy of the Nebraska Department of Education not to discriminate on the basis of gender, disability, race, color, religion, marital status, age or national origin in its education programs, administration, policies, employment or other agency programs.

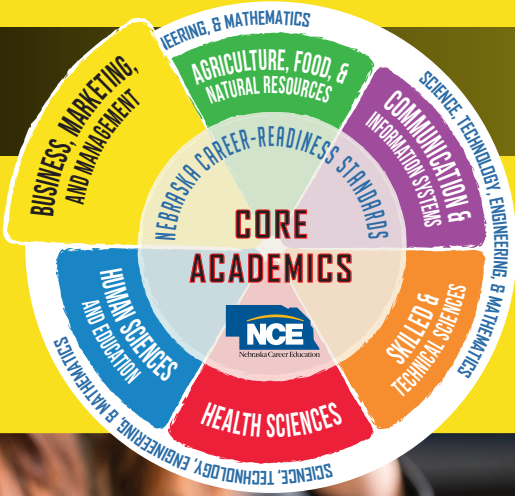
This project was funded through the Carl D. Perkins Career and Technical Education Act of 2006, administered through the Nebraska Department of Education. However, the contents do not necessarily represent the policy of the United States Department of Education, and you should not assume endorsement by the Federal Government.

Funding provided through the Nebraska VR Career Pathway Advancement Project



\$ Finance

This career cluster prepares for careers that relate to making strategic decisions to obtain, save, protect and grow the financial assets of businesses and individuals. It includes careers in planning and related services for financial and investment planning, banking, insurance and business financial management.



FINANCE H3 OCCUPATIONS

FINANCE H3 OCCUPATIONS	Average Entry Wage
Accountants and Auditors	\$42,734
Loan Officers	\$44,323
Financial Managers	\$76,926
Claims Adjusters, Examiners, and Investigators	\$39,957
Financial Analysts	\$51,111
Personal Financial Advisors	\$40,472
Securities, Commodities, and Financial Services Sales Agents	\$33,468
Credit Analysts	\$45,054
Actuaries	\$59,685
Budget Analysts	\$46,736

This H3 list based on projected highest number of openings in Nebraska through 2024. Source: Nebraska Department of Labor, Office of Labor Market Information.

TYPICAL HIGH SCHOOL CLASSES



- Accounting
- Personal Finance
- Business Economics
- Wealth Building and Financial Management
- Microeconomics
- Macroeconomics

CAREER & TECHNICAL STUDENT ORGANIZATIONS

GET INVOLVED WITH THESE ORGANIZATIONS!



VIRTUAL CAREER TOURS OF NEBRASKA BUSINESSES



Find more H3 jobs at: h3.ne.gov

www.necareertours.com

Education Pathways to begin your career	Certificate	Diploma	Associate Degree	Bachelor's Degree	Military
ACCOUNTING	✓	✓	✓	✓	✓
ACTUARIAL SCIENCE				✓	
AGRIBUSINESS	✓		✓	✓	
ACCOUNTING ASSISTANT / SPECIALIST	✓				✓
BANKING AND FINANCE SERVICES			✓	✓	
CERTIFIED FINANCIAL ANALYST / PLANNER	✓				✓
BUSINESS, MARKETING AND INFORMATION TECHNOLOGY TEACHER				✓	
ECONOMICS				✓	
FINANCIAL MANAGEMENT SERVICES				✓	✓
INSURANCE SERVICES	✓		✓		
INVESTMENTS AND SECURITIES			✓	✓	
MEDICAL INSURANCE CODING / BILLING / CLAIMS			✓		
TAX PREPARATION	✓		✓		

Advanced and professional degrees not included on this chart.

Check out all education and training options. Entry into these careers may begin with:

- Apprenticeships
- On-the-job training
- Attaining stackable credentials
- Entry-level employment

Entrepreneurship is a career choice!



Start your own business!



Finance expects an average of **1,591 job openings** each year.

EXPLORE MORE AT

For diplomas, certificates and associate degrees in most NE Community Colleges: www.mygreatcareer.com

For all types of pathways including professional degrees: www.NebraskaCareerConnections.org or www.mynextmove.org

For military careers: www.careersinthemilitary.com or www.todaymilitary.com

It is the policy of the Nebraska Department of Education not to discriminate on the basis of gender, disability, race, color, religion, marital status, age or national origin in its education programs, administration, policies, employment or other agency programs.

This project was funded through the Carl D. Perkins Career and Technical Education Act of 2006, administered through the Nebraska Department of Education. However, the contents do not necessarily represent the policy of the United States Department of Education, and you should not assume endorsement by the Federal Government.

Funding provided through the Nebraska VR Career Pathway Advancement Project





It is the policy of the Nebraska Department of Education not to discriminate on the basis of gender, disability, race, color, religion, marital status, age or national origin in its education programs, administration, policies, employment or other agency programs.

This project was funded through the Carl D. Perkins Career and Technical Education Act of 2006, administered through the Nebraska Department of Education. However, the contents do not necessarily represent the policy of the United States Department of Education, and you should not assume endorsement by the Federal Government.

This guidance document is advisory in nature but is binding on an agency until amended by such agency. A guidance document does not include internal procedural documents that only affect the internal operations of the agency and does not impose additional requirements or penalties on regulated parties or include confidential information or rules and regulations made in accordance with the Administrative Procedure Act. If you believe that this guidance document imposes additional requirements or penalties on regulated parties, you may request a review of the document. For comments regarding this document contact nde.guidance@nebraska.gov.